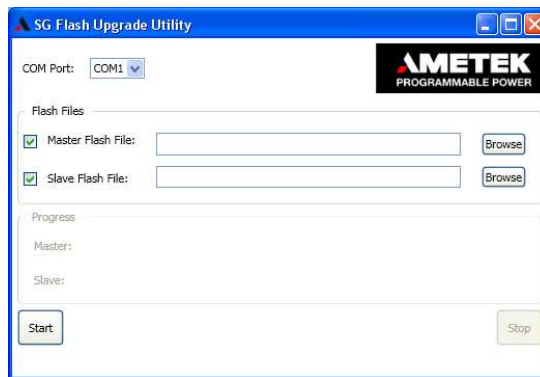


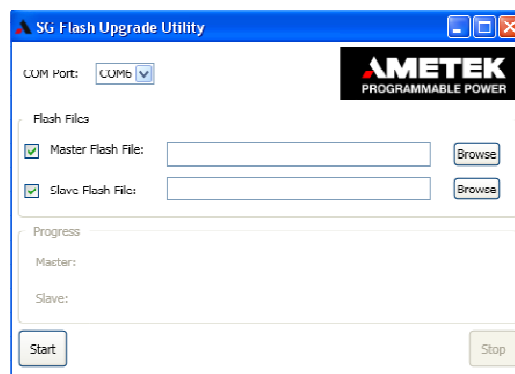
SG FLASH UPDATER INSTRUCTIONS

1. Connect an RS232 cable from PC into the RS232 connector on the back of the SG unit. Power on SG Unit.
2. Open the SG Flash Upgrade Utility program.



3. In the SG Flash Upgrade Utility window select the proper COM Port to be used by clicking the drop down box.
4. Under the Flash Files sub window check "Master Flash File" click "Browse" and load the needed .S19 file. Place a check on "Slave Flash File" click "Browse" and load the needed .hex file.

Note: If necessary the Master and Slave Flash files can be loaded separately.



5. Click "Start" at the bottom of the window. Wait until update completes. Cycle power to the unit.

